

## Empowering EMS - Your Project. Our Responsibility.

### Our Technologies in SMT Manufacturing

#### **Mühlbauer Laser Marking System**

- Labelling area 360mm x 360mm

#### **ASYS Cleaning Station**

- Contactless, anti-static cleaning of unpopulated circuit boards

#### **DEK Solder Paste Printer**

- Simultaneous in/out PCB movement for reduced cycle times

#### **ASMPT Solder Paste Inspection System**

- 3D on-the-fly compensation of PCB warping for high measurement accuracy

#### **Fuji SMD Assembly System**

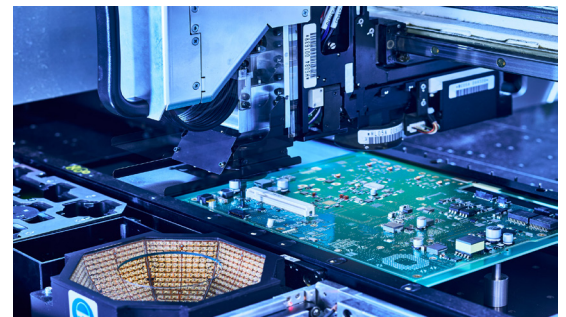
- Assembly capacity of 120,000 contact units per hour

#### **REHM Reflow Convection Soldering System**

- High-efficiency reflow convection soldering system

#### **Omron Inline 3D AOI System**

- Fully automated with a resolution of up to 15µm



### Our Technologies in THT Manufacturing

#### **Conventional Manual Assembly**

- Complete assembly of prototypes possible

#### **SEHO Full-Tunnel Wave Soldering System**

- Freely configurable preheating range from 1800 mm to 3300 mm in length

#### **SEHO Selective Soldering System**

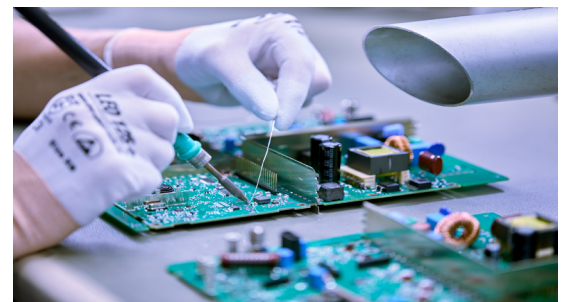
- Innovative soldering nozzles for mini-wave and multi-wave processes

#### **Manual Soldering Process**

- Manual soldering according to IPC-A-610 Class 2/3 & WHMA-A-620

#### **Schunk Stand-Alone Depaneling Machines**

- Flexible creation of workpiece carriers using magnetic pins



## Empowering EMS - Your Project. Our Responsibility.

### Our Assembly Technologies

#### **Assembly Processes**

- Pre-assembly and final assembly of complex modules

#### **Different Assembly Technologies**

- Press-fit technology & ultrasonic welding
- (Partially) automated assembly & screw-fastening technologies
- Robotic technology, casting and bonding processes
- Coating according to customer-specific requirements

### Our Testing & Inspection Technologies

- Boundary Scan & In-circuit-test (e.g. needle bed adapter)
- Conception & execution of customer-specific tests
- Creation of testing software by in-house software engineers
- X-Ray according to customer-specific requirements

### Our Quality Management

- DIN EN ISO 9001, DIN EN ISO 14001, DIN EN ISO 50001
- RoHS and REACH compliant production
- Calibration law compliant production according to customer-specific requirements

### Our Contact

#### **LINTEC Electronics GmbH**

Lindenstraße 3  
09241 Mühlau  
Germany



+49 3722 6073-10



sales@lintec-electronics.de



www.lintec-electronics.de

